

DEZIGN | DISTINK WALL PANEL INSTALLATION INSTRUCTIONS

PRECAUTIONS



Always wear work gloves, safety glasses and mask when cutting this product.

TOOLS

- 100% polyurethane construction glue (3 tubes per 100 ft² or 10 m²)
- Caulking gun
- Electric mitre saw
- Table saw
- Level
- Measuring tape
- Cutter
- Pneumatic finish nailer (#23 gauge finish nail)
- Stepladder

WALL PANEL NEEDS TO BE GLUED AND NAILED FOR A SUCCESSFUL INSTALLATION AND TO PREVENT FUTURE WARPING. FAILURE TO COMPLY WITH INSTALLATION INSTRUCTIONS SHALL VOID APPLICATION OF THE WARRANTY.

Do not install over material other than drywall or plywood.

MAKE SURE YOUR KNIVES AND SAWBLADES ARE IN TOP CONDITION.

FIRST, check that wall is level from floor to ceiling and edge-to-edge. If not, adjust accordingly.

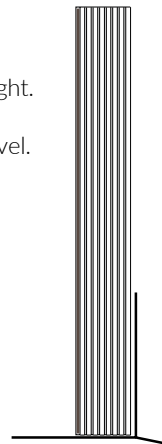
STEP 1:

Apply a line of 100% polyurethane glue (1/2" (1.3 cm) from the edge) and an X inside the rectangle on the back of the wall panel.



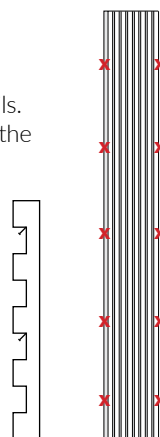
STEP 2:

Position first panel vertically at bottom right. Make sure each panel and each column is level.



STEP 3:

Nail panel in place with #23 gauge nails. Nail at the base of the tabs at an angle to prevent the nails from showing.



STEP 4 : →

Installation of next panels

- Repeat Step 1.
- Set panel **B** against **A**.
- Repeat Step 3.

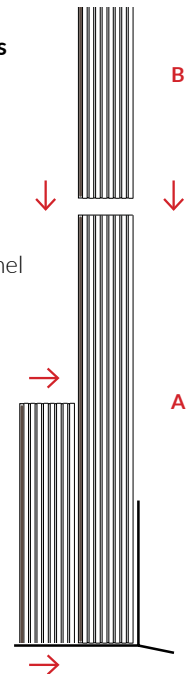
STEP 5:

End a column

Cut any excess of wall panel flush with top of wall.

STEP 6: Start a new column

Use remaining piece of previous column or start with a new piece. Repeat Step 1, 2 and 3



STEP 7: Last column

Cut panel on the left to fit available space.

CEILING APPLICATIONS :

Special glues must be specified by the onsite engineer or architect with the use of #18 Gauge nails and installed by a licensed contractor or carpenter. Structural weight limitations need to be considered.

Ceiling applications are not covered by this warranty.

Finium guarantees the conformity of its products when they are installed according to installation instructions and maintained in an environment where ambient humidity ranges between 35% and 55%: before, during and after installation.

PRIOR TO INSTALLATION, PLACE CARTONS IN ORIGINAL PACKAGING FLAT ON THE FLOOR OF PLANNED ROOM.

